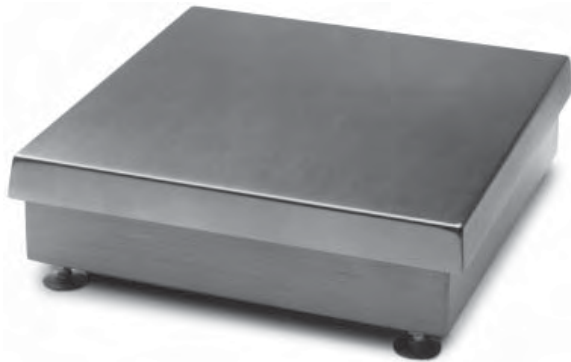


BenchMark™ SL Series Light-Capacity Bench Scales



(SEE CHART ON BACK OF PAGE FOR PART #'S.)



Measurement
Canada
Approved

BenchMark SL Series bench scales offer unprecedented reliability and accuracy for light-capacity bench-top weighing applications. The unique LifeGuard™ base design provides tough load cell protection by isolating the load cell from mechanical overloads and shock loads. The efficient single-point design provides for highly sensitive load introduction.

The BenchMark SL delivers exceptional performance in a variety of industrial weighing environments, including food and chemical processing. It's constructed of 304 stainless steel that's easily maintained. As your customers' needs grow, the BenchMark SL Series can be fitted with a variety of mounting options and indicators for complete stand alone operation. The optional stainless steel clamshell load cell shield enhances protection in washdown environments.

Applications

- Food and chemical processing
- Washdown environments
- Rugged industrial use
- Legal-for-Trade

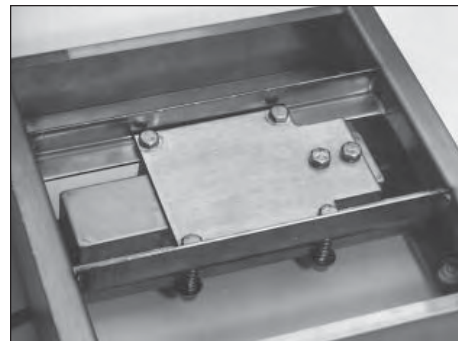
Standard Features

- 304 stainless steel construction
- LifeGuard™ base design isolates load cell from overloads and shock loads for added durability
- Specially-designed adjustable support feet provide exceptional traction and won't scratch surfaces
- RL1042-N5 encapsulated single-point NTEP-certified aluminum load cell
- Adaptable to SURVIVOR® CW-80 columns
- Bubble level

Options/Accessories

- 53001** 304 stainless steel clamshell for added load cell protection
- 64574** 12" column for IQ plus® 355 or IQ plus® 210
- 64575** 12" column for IQ plus® 390-DC or IQ plus® 590-DC
- 66691*** 18" column for IQ plus® 355 or IQ plus® 210
- 66692*** 18" column for IQ plus® 390-DC or IQ plus® 590-DC
- 64576** Attachment bracket for IQ plus® 355 or IQ plus® 210
- 64577** Attachment bracket for IQ plus® 390-DC or IQ plus® 590-DC
- 35196** 10" x 10" cutting board, white food-grade plastic
- 35197** 12" x 12" cutting board, white food-grade plastic
- 22125** Additional operating manual

* Not recommended for use with scale bases smaller than 12" x 12"



Optional stainless steel clamshell

LOAD CELL, NTEP CERTIFIED:

RL1042-N5 encapsulated single-point

RATED OUTPUT:

0.91 mV/V (0.6 mV/V on 2 lb capacity)

OUTPUT IMPEDANCE:

350 ohms

MAXIMUM OVERLOAD:

200%

OVERLOAD PROTECTION:

Shock-absorbing spider

CABLE LENGTH:

10' (3m) 6-wire shielded

COMPENSATED TEMPERATURE RANGE:

14°F to 104°F (-10°C to 40°C)

SAFE TEMPERATURE RANGE:

-22°F to 158°F (-30°C to 70°C)

APPROVALS

NTEP-certified per H-44, Class III, 5000d, CC #95-072A2, Measurement Canada approved, AM-5082

WARRANTY:

Two year limited warranty

DIMENSIONS

PART#	CAPACITY LB (KG)	PLATFORM DIMENSIONS INCHES (MM)	HEIGHT INCHES (MM)	SHIP WEIGHT LB (KG)
18575*	2 lb (1.0 kg)	10" L x 10" W (254mm L x 254mm W)	3.15" (80mm)	13 lb (5.9 kg)
18576	5 lb (2.5 kg)	10" L x 10" W (254mm L x 254mm W)	3.15" (80mm)	13 lb (5.9 kg)
18577	10 lb (5 kg)	10" L x 10" W (254mm L x 254mm W)	3.15" (80mm)	13 lb (5.9 kg)
18578	20 lb (10 kg)	10" L x 10" W (254mm L x 254mm W)	3.15" (80mm)	13 lb (5.9 kg)
18579	30 lb (15 kg)	10" L x 10" W (254mm L x 254mm W)	3.15" (80mm)	13 lb (5.9 kg)
32914	30 lb (15 kg)	12" L x 12" W (305mm L x 305mm W)	3.25" (83mm)	14 lb (6.4 kg)
32913	50 lb (25 kg)	12" L x 12" W (305mm L x 305mm W)	3.25" (83mm)	14 lb (6.4 kg)
35198	100 lb (50 kg)	12" L x 12" W (305mm L x 305mm W)	3.25" (83mm)	14 lb (6.4 kg)

* Non-NTEP

BenchMark™ CW-80B Series Bench Scales



(SEE CHART ON BACK OF PAGE FOR PART #'S.)



Measurement
Canada
Approved

BenchMark CW-80B Series bench scales offer unprecedented reliability and accuracy for light-capacity bench-top weighing applications. The unique LifeGuard™ base design provides tough load cell protection by isolating the load cell from mechanical overloads and shock loads. A stainless steel load cell resists corrosion for long life in washdown applications. The efficient single-point design provides for highly sensitive load introduction.

The BenchMark CW-80B Series performs exceptionally in a variety of industrial weighing environments. It's constructed of 304 stainless steel that's easily maintained. As your customers' needs grow, the BenchMark CW-80B Series can be fitted with a variety of mounting options and indicators for complete stand-alone operation.

Applications

- Food and chemical processing
- Hostile washdown environments
- Rugged industrial use
- General purpose weighing

Standard Features

- Industrial-quality 304 stainless steel construction
- Rugged 5-point overload protection
- LifeGuard™ shock-absorbing base design
- Highly-durable and corrosion-resistant RL1380 stainless steel load cell
- Lift-up protection screw prevents load cell damage when transported
- Specially-designed adjustable support feet provide exceptional traction and won't scratch surfaces
- Adaptable to SURVIVOR® CW-80 columns
- Bubble level

Options/Accessories

- 53001** 304 stainless steel clamshell for added load cell protection
- 64574** 12" column for IQ plus® 355 or IQ plus® 210
- 64575** 12" column for IQ plus® 390-DC or IQ plus® 590-DC
- 66691*** 18" column for IQ plus® 355 or IQ plus® 210
- 66692*** 18" column for IQ plus® 390-DC or IQ plus® 590-DC
- 64576** Attachment bracket for IQ plus® 355 or IQ plus® 210
- 64577** Attachment bracket for IQ plus® 390-DC or IQ plus® 590-DC
- 35196** 10" x 10" cutting board, white food-grade plastic
- 35197** 12" x 12" cutting board, white food-grade plastic
- 22125** Additional operating manual

* Not recommended for use with scale bases smaller than 12" x 12"

LOAD CELL, NTEP CERTIFIED:

RL1380 encapsulated stainless steel single-point load cell

RATED OUTPUT:

2.0 mV/V

OUTPUT IMPEDANCE:

350 ohms

MAXIMUM OVERLOAD:

200%

OVERLOAD PROTECTION:

Shock-absorbing spider

CABLE LENGTH:

10' (3m) 4-wire shielded

COMPENSATED TEMPERATURE RANGE:

14°F to 104°F (-10°C to 40°C)

APPROVALS

NTEP-certified per H-44, Class III, 3000d, CC #96-107;
Measurement Canada approved, AM-5156

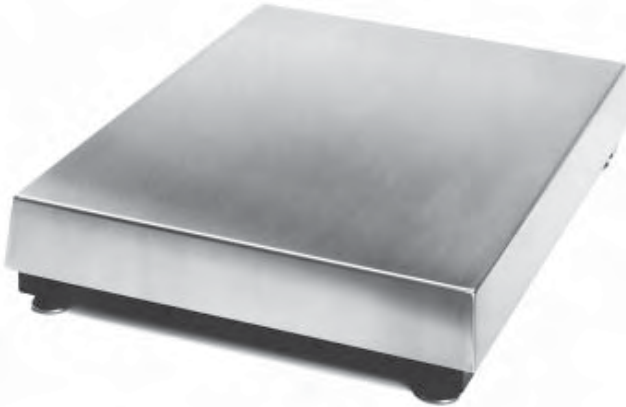
WARRANTY:

Two year limited warranty

DIMENSIONS

PART#	CAPACITY LB (KG)	PLATFORM DIMENSIONS INCHES (MM)	HEIGHT INCHES (MM)	SHIP WEIGHT LB (KG)
35075	6 lb (3 kg)	10" L x 10" W (254mm L x 254mm W)	3.15" (80mm)	13 lb (5.9 kg)
35076	10 lb (5 kg)	10" L x 10" W (254mm L x 254mm W)	3.15" (80mm)	13 lb (5.9 kg)
35077	15 lb (7 kg)	10" L x 10" W (254mm L x 254mm W)	3.15" (80mm)	13 lb (5.9 kg)
35078	30 lb (15 kg)	10" L x 10" W (254mm L x 254mm W)	3.15" (80mm)	13 lb (5.9 kg)
35079	30 lb (15 kg)	12" L x 12" W (305mm L x 305mm W)	3.25" (83mm)	14 lb (6.4 kg)
35080	60 lb (30 kg)	12" L x 12" W (305mm L x 305mm W)	3.25" (83mm)	14 lb (6.4 kg)

BenchMark™ Series Medium- to High-Capacity Bench Scales



(SEE CHART ON BACK OF PAGE FOR PART #'S.)



Measurement
Canada
Approved

BenchMark Series bench scales offer unprecedented reliability and accuracy for medium-capacity bench-top weighing. Heavy-duty steel construction provides durability and long life in a variety of demanding industrial weighing environments. An efficient single-point design offers highly sensitive load introduction.

The BenchMark Series is available in rugged 304 stainless steel construction. Stainless steel models are easily maintained, making them ideal for food and chemical processing applications. As your needs grow, the BenchMark SL Series can be fitted with a variety of mounting options and indicators for complete stand-alone operation. An optional stainless steel clamshell load cell shield offers added protection in washdown environments.



Optional stainless steel clamshell

Applications

- Food and chemical processing
- Rugged industrial environments
- Medium- to high-capacity bench-top weighing
- Commercial buying and selling

Standard Features

- Mild steel construction
- 304 stainless steel cover
- Rugged 5-point overload protection
- Four stainless steel leveling feet
- Bubble level
- Optional 304 stainless steel construction
- RL1042-N5 encapsulated single-point NTEP-certified aluminum load cell (12" x 12" and 12" x 18"); RL1260-N5 encapsulated single-point, aluminum load cell (18" x 18", 18" x 24" and 24" x 24"); RL1250-N5 encapsulated single-point NTEP-certified aluminum load cell on all 1,000 lb bases

Options/Accessories

- 53001** 304 stainless steel clamshell for added load cell protection (12" x 12" and 12" x 18")
- 41292** 304 stainless steel clamshell for added load cell protection (18" x 18", 18" x 24" and 24" x 24"), except 1000 lb capacity
- 18805** 304 stainless steel clamshell for added load cell protection (18" x 18", 18" x 24" and 24" x 24"), 1000 lb capacity only
- 64574** 12" column for IQ plus® 355 or IQ plus® 210
- 64575** 12" column for IQ plus® 390-DC or IQ plus® 590-DC
- 66691*** 18" column for IQ plus® 355 or IQ plus® 210
- 66692*** 18" column for IQ plus® 390-DC or IQ plus® 590-DC
- 64576** Attachment bracket for IQ plus® 355 or IQ plus® 210
- 64577** Attachment bracket for IQ plus® 390-DC or IQ plus® 590-DC
- 22125** Additional operating manual

* Not recommended for use with scale bases smaller than 12" x 12"

Load Cell Options—Non-NTEP

- N/A** RL1140 potted single-point, non-NTEP stainless steel load cell (50 lb capacity, 12" x 12" or 12" x 18")
- N/A** RL1140 potted single-point, non-NTEP stainless steel load cell (100 lb capacity, 12" x 12" or 12" x 18")

LOAD CELL, NTEP CERTIFIED:

RL1042-N5 encapsulated single-point: 12" x 12" and 12" x 18"
 RL1260-N5 encapsulated single-point: 18" x 18", 18" x 24"
 and 24" x 24"
 RL1250-N5 encapsulated single-point on all 1,000 lb bases
 Optional non-NTEP RL1140 potted single-point, stainless steel
 on 50 lb and 100 lb capacities, 12" x 18" only

RATED OUTPUT:

0.91 mV/V

OUTPUT IMPEDANCE:

350 ohms

MAXIMUM OVERLOAD:

200%

OVERLOAD PROTECTION:

5 point, independently adjusted

CABLE LENGTH:

10' (3m) 6-wire shielded

COMPENSATED TEMPERATURE RANGE:

14°F to 104°F (-10°C to 40°C)

APPROVALS

NTEP-certified per H-44, Class III, 5000d, CC #95-072A1,
 Measurement Canada approved, AM-5082

WARRANTY:

Two year limited warranty

DIMENSIONS

MILD STEEL PART #	STAINLESS STEEL PART #	CAPACITY LB (KG)	PLATFORM DIMENSIONS INCHES (MM)	HEIGHT INCHES (MM)	SHIPPING WEIGHT LB (KG) (*2 boxes)
18580	**	30 lb (15 kg)	12" L x 12" W (305mm L x 305mm W)	4.12" (105mm)	23 lb (10.5 kg)
18582	**	50 lb (25 kg)	12" L x 12" W (305mm L x 305mm W)	4.12" (105mm)	23 lb (10.5 kg)
18584	**	100 lb (50 kg)	12" L x 12" W (305mm L x 305mm W)	4.12" (105mm)	23 lb (10.5 kg)
18586	32918	50 lb (25 kg)	12" L x 18" W (305mm L x 458mm W)	4.12" (105mm)	30 lb (10.5 kg)
18588	32919	100 lb (50 kg)	12" L x 18" W (305mm L x 458mm W)	4.12" (105mm)	30 lb (10.5 kg)
18590	18591	50 lb (25 kg)	18" L x 18" W (458mm L x 458mm W)	5.25" (134mm)	62 lb (28.1 kg)
18592	18593	100 lb (50 kg)	18" L x 18" W (458mm L x 458mm W)	5.25" (134mm)	62 lb (28.1 kg)
18594	18595	150 lb (75 kg)	18" L x 18" W (458mm L x 458mm W)	5.25" (134mm)	62 lb (28.1 kg)
18596	18597	200 lb (100 kg)	18" L x 18" W (458mm L x 458mm W)	5.25" (134mm)	62 lb (28.1 kg)
18598	18599	250 lb (125 kg)	18" L x 18" W (458mm L x 458mm W)	5.25" (134mm)	62 lb (28.1 kg)
18600	18601	300 lb (150 kg)	18" L x 18" W (458mm L x 458mm W)	5.25" (134mm)	62 lb (28.1 kg)
18602	18603	500 lb (250 kg)	18" L x 18" W (458mm L x 458mm W)	5.25" (134mm)	62 lb (28.1 kg)
18604	18605	1000 lb (500 kg)	18" L x 18" W (458mm L x 458mm W)	5.25" (134mm)	62 lb (28.1 kg)
18606	18607	50 lb (25 kg)	18" L x 24" W (458mm L x 610mm W)	5.25" (134mm)	60 & 24 lb (27.2 & 10.9 kg)*
18608	18609	100 lb (50 kg)	18" L x 24" W (458mm L x 610mm W)	5.25" (134mm)	60 & 24 lb (27.2 & 10.9 kg)*
18610	18611	150 lb (75 kg)	18" L x 24" W (458mm L x 610mm W)	5.25" (134mm)	60 & 24 lb (27.2 & 10.9 kg)*
18612	18613	200 lb (100 kg)	18" L x 24" W (458mm L x 610mm W)	5.25" (134mm)	60 & 24 lb (27.2 & 10.9 kg)*
18614	18615	250 lb (125 kg)	18" L x 24" W (458mm L x 610mm W)	5.25" (134mm)	60 & 24 lb (27.2 & 10.9 kg)*
18616	18617	300 lb (150 kg)	18" L x 24" W (458mm L x 610mm W)	5.25" (134mm)	60 & 24 lb (27.2 & 10.9 kg)*
18618	18619	500 lb (250 kg)	18" L x 24" W (458mm L x 610mm W)	5.25" (134mm)	60 & 24 lb (27.2 & 10.9 kg)*
18620	18621	1000 lb (500 kg)	18" L x 24" W (458mm L x 610mm W)	5.25" (134mm)	60 & 24 lb (27.2 & 10.9 kg)*
18622	18623	100 lb (50 kg)	24" L x 24" W (610mm L x 610mm W)	5.25" (134mm)	64 & 28 lb (29.0 & 12.7 kg)*
18624	18625	150 lb (75 kg)	24" L x 24" W (610mm L x 610mm W)	5.25" (134mm)	64 & 28 lb (29.0 & 12.7 kg)*
18626	18627	200 lb (100 kg)	24" L x 24" W (610mm L x 610mm W)	5.25" (134mm)	64 & 28 lb (29.0 & 12.7 kg)*
18628	18629	250 lb (125 kg)	24" L x 24" W (610mm L x 610mm W)	5.25" (134mm)	64 & 28 lb (29.0 & 12.7 kg)*
18630	18631	300 lb (150 kg)	24" L x 24" W (610mm L x 610mm W)	5.25" (134mm)	64 & 28 lb (29.0 & 12.7 kg)*
18632	18633	500 lb (250 kg)	24" L x 24" W (610mm L x 610mm W)	5.25" (134mm)	64 & 28 lb (29.0 & 12.7 kg)*
18634	18635	1000 lb (500 kg)	24" L x 24" W (610mm L x 610mm W)	5.25" (134mm)	64 & 28 lb (29.0 & 12.7 kg)*

** See Benchmark SL and CW-80B benchscales

IQ plus[®] 2100 Digital Bench Scale



IQ plus 2100 with attachment bracket



IQ plus 2100 with column



IQ plus 2100 with tilt stand



Measurement
Canada
Approved



(Indicator only)

(SEE CHART ON BACK OF PAGE FOR PART #'S)

From carton to countertop, the new IQ plus 2100's easy-setup design will have you instantly up and weighing. Factor in a highly-visible display, convenient mounting options, and extra load cell protection, and you've got the best-built bench scale in its class!

Whether controlling portions or weighing parts, the 2100 is designed for quick and easy use. All operations are controlled through just two buttons—zero and units. Configuration can be completed through the indicator's front panel, EDP port, or from a personal computer with Revolution™ Scale Software. Select from lb, kg, oz, lb and oz, or grams to serve your specific needs.

Perfect for use in portion control and a variety of food processing applications, the IQ plus 2100 guarantees dependable, long-lasting performance. Sealed, stainless steel buttons and a NEMA 4X/IP66 stainless steel washdown indicator enclosure guard electronics against messy ingredient spills, while standard overload and upload stops help protect the scale base from load cell damage.

Applications

- Portion control
- Baker's scale
- Pizza scale
- General purpose weighing

Standard Features

- NEMA 4X, 304 stainless steel
- Large, bold 0.8" Light Emitting Diode (LED) Display
- Status annunciators: lb, kg, oz, g, negative, motion, center of zero
- One full duplex RS-232 port
- Two digital inputs for remote zero, print, and units
- 12" column, attachment bracket, or tilt stand for table, wall or under counter mounting
- 115 VAC operation, 230 VAC available
- RL1042 aluminum, single point load cell
- Overload and upload stops on scale base
- Stainless steel, tactile feel, piezo zero and units buttons
- Displays units in decimal lb, kg, oz, lb & oz, and grams

Options/Accessories

- 53001 304 stainless steel clamshell for added load cell protection
- 64126 Load cell quick disconnect
- 64123 Remote switch for zero, units, and print (non-washdown)
- N/A Print button mounted on the top of the enclosure (not field installable)
- N/A RL1380 stainless steel load cell
- N/A* 18" column replacing standard 12" column
- 53415 Additional operation manual

* Not recommended for use with scale bases smaller than 12" x 12"

IQ plus[®] 2100SL Digital Bench Scale

For harsh applications, the IQ plus 2100SL package offers the same benefits with added features of the legendary BenchMark SL base. The unique LifeGuard™ breakaway base of the SL incorporates extra load cell protection from overloads.

See price page BCS-5 (P) for part numbers and pricing

LINE VOLTAGES:

115 or 230 VAC

FREQUENCY:

50 or 60 Hz

POWER CONSUMPTION:

70 mA @ 115 VAC (8W)
35 mA @ 230 VAC (8W)

FUSING:

115 VAC: 2 x 200 mA TR5 subminiature fuses
Wickmann Time-Lag 19374 Series
UL Listed, CSA Certified

230 VAC: 2 x 200 mA TR5 subminiature fuses
Wickmann Time-Lag 19374 Series
UL Recognized, VDE Approved

FULL SCALE INPUT SIGNAL:

Up to 35 mV

EXCITATION VOLTAGE:

10 ± 0.25 VDC, 4 x 350Ω load cells

ANALOG SIGNAL INPUT RANGE:

0.6 mV/V — 4.5 mV/V

ANALOG SIGNAL SENSITIVITY:

0.3 μV/graduation minimum, 1.5 μV/graduation recommended

INPUT IMPEDENCE:

200 MΩ, typical

DISPLAY RESOLUTION:

10,000 dd

INPUT SENSITIVITY:

200 nV per internal count

SYSTEM LINEARITY:

Within 0.01% of full scale

CALIBRATION METHOD:

Software, constants stored in EEPROM

COMMON MODE VOLTAGE:

± 4 V, referred to earth

INPUT OVERLOAD:

± 12 V continuous, static discharge protected

RFI PROTECTION:

Signal, excitation, and sense lines protected by capacitor bypass

DIGITAL INPUTS:

Two inputs, TTL or switch closure, active-low

DIGITAL FILTER:

Software selectable

SERIAL COMMUNICATIONS:

Full duplex RS-232; 9600, 4800, 2400, 1200 bps; 7 or 8 data bits; even, odd, or no parity

DISPLAY:

6-digit Light Emitting Diode (LED) display. 7-segment, 0.8" (20mm) digits

LED ANNUNCIATORS:

Negative value, center of zero, motion, kg, g, lb, oz

KEYPAD:

Two stainless steel piezo switches

OPERATING TEMPERATURE:

14°F to 104°F (-10°C to 40°C)

STORAGE TEMPERATURE:

14°F to 122°F (-10°C to 50°C)

DIMENSIONS:

Indicator: 9.5" x 6.0" x 2.75" (241mm x 152mm x 70mm)

Base: Listed below

RATING/MATERIAL:

NEMA 4X/IP66, stainless steel

APPROVALS:

Indicator: NTEP certified per H-44, Class III L 10,000d; CC# 00-045
Measurement Canada approved, AM-5374; UL & C-UL listed
Base: NTEP certified per H-44, Class III 5,000d; CC# 95-072A2

WARRANTY:

Two year limited warranty

IQ PLUS 2100SL SPECIFICATIONS

For indicator specifications please refer to the above listed.

For base specifications please refer to the BenchMark SL Series catalog page BCS-1.

PART #	PLATFORM SIZE	CAPACITY (lb/kg/gm/oz)	DESCRIPTION	SHIP WEIGHT (LB (KG))
IQ plus 2100 - 115 VAC				
63043...	10" x 10" (254 x 254mm)	5 x 0.001 lb/2.5 x 0.0005 kg/2,500 x 0.5 gm/80 x 0.02 oz	with attachment bracket	23 lb (10 kg)
63048...	10" x 10" (254 x 254mm)	5 x 0.001 lb/2.5 x 0.0005 kg/2,500 x 0.5 gm/80 x 0.02 oz	with 12" column	25 lb (11 kg)
63053...	10" x 10" (254 x 254mm)	5 x 0.001 lb/2.5 x 0.0005 kg/2,500 x 0.5 gm/80 x 0.02 oz	with tilt stand	23 lb (10 kg)
63042...	10" x 10" (254 x 254mm)	10 x 0.002 lb/5 x 0.001 kg/5,000 x 1 gm/160 x 0.05 oz	with attachment bracket	23 lb (10 kg)
63047...	10" x 10" (254 x 254mm)	10 x 0.002 lb/5 x 0.001 kg/5,000 x 1 gm/160 x 0.05 oz	with 12" column	25 lb (11 kg)
63052...	10" x 10" (254 x 254mm)	10 x 0.002 lb/5 x 0.001 kg/5,000 x 1 gm/160 x 0.05 oz	with tilt stand	23 lb (10 kg)
63041...	10" x 10" (254 x 254mm)	25 x 0.005 lb/10 x 0.002 kg/10,000 x 2 gm/400 x 0.10 oz	with attachment bracket	23 lb (10 kg)
63046...	10" x 10" (254 x 254mm)	25 x 0.005 lb/10 x 0.002 kg/10,000 x 2 gm/400 x 0.10 oz	with 12" column	25 lb (11 kg)
63051...	10" x 10" (254 x 254mm)	25 x 0.005 lb/10 x 0.002 kg/10,000 x 2 gm/400 x 0.10 oz	with tilt stand	23 lb (10 kg)
63040...	12" x 12" (304.8 x 304.8mm)	50 x 0.01 lb/25 x 0.005 kg/25,000 x 5 gm/800 x 0.20 oz	with attachment bracket	26 lb (12 kg)
63045...	12" x 12" (304.8 x 304.8mm)	50 x 0.01 lb/25 x 0.005 kg/25,000 x 5 gm/800 x 0.20 oz	with 12" column	28 lb (13 kg)
63050...	12" x 12" (304.8 x 304.8mm)	50 x 0.01 lb/25 x 0.005 kg/25,000 x 5 gm/800 x 0.20 oz	with tilt stand	26 lb (12 kg)
63039...	12" x 12" (304.8 x 304.8mm)	100 x 0.02 lb/50 x 0.01 kg/50,000 x 10 gm/1,600 x 0.50 oz	with attachment bracket	26 lb (12 kg)
63044...	12" x 12" (304.8 x 304.8mm)	100 x 0.02 lb/50 x 0.01 kg/50,000 x 10 gm/1,600 x 0.50 oz	with 12" column	28 lb (13 kg)
63049...	12" x 12" (304.8 x 304.8mm)	100 x 0.02 lb/50 x 0.01 kg/50,000 x 10 gm/1,600 x 0.50 oz	with tilt stand	26 lb (12 kg)
IQ plus 2100 - 230 VAC				
63058...	10" x 10" (254 x 254mm)	5 x 0.001 lb/2.5 x 0.0005 kg/2,500 x 0.5 gm/80 x 0.02 oz	with attachment bracket	23 lb (10 kg)
63063...	10" x 10" (254 x 254mm)	5 x 0.001 lb/2.5 x 0.0005 kg/2,500 x 0.5 gm/80 x 0.02 oz	with 12" column	25 lb (11 kg)
63068...	10" x 10" (254 x 254mm)	5 x 0.001 lb/2.5 x 0.0005 kg/2,500 x 0.5 gm/80 x 0.02 oz	with tilt stand	23 lb (10 kg)
63057...	10" x 10" (254 x 254mm)	10 x 0.002 lb/5 x 0.001 kg/5,000 x 1 gm/160 x 0.05 oz	with attachment bracket	23 lb (10 kg)
63062...	10" x 10" (254 x 254mm)	10 x 0.002 lb/5 x 0.001 kg/5,000 x 1 gm/160 x 0.05 oz	with 12" column	25 lb (11 kg)
63067...	10" x 10" (254 x 254mm)	10 x 0.002 lb/5 x 0.001 kg/5,000 x 1 gm/160 x 0.05 oz	with tilt stand, 230 VAC	23 lb (10 kg)
63056...	10" x 10" (254 x 254mm)	25 x 0.005 lb/10 x 0.002 kg/10,000 x 2 gm/400 x 0.10 oz	with attachment bracket	23 lb (10 kg)
63061...	10" x 10" (254 x 254mm)	25 x 0.005 lb/10 x 0.002 kg/10,000 x 2 gm/400 x 0.10 oz	with 12" column	25 lb (11 kg)
63066...	10" x 10" (254 x 254mm)	25 x 0.005 lb/10 x 0.002 kg/10,000 x 2 gm/400 x 0.10 oz	with tilt stand	23 lb (10 kg)
63055...	12" x 12" (304.8 x 304.8mm)	50 x 0.01 lb/25 x 0.005 kg/25,000 x 5 gm/800 x 0.20 oz	with attachment bracket	26 lb (12 kg)
63060...	12" x 12" (304.8 x 304.8mm)	50 x 0.01 lb/25 x 0.005 kg/25,000 x 5 gm/800 x 0.20 oz	with 12" column	28 lb (13 kg)
63065...	12" x 12" (304.8 x 304.8mm)	50 x 0.01 lb/25 x 0.005 kg/25,000 x 5 gm/800 x 0.20 oz	with tilt stand	26 lb (12 kg)
63054...	12" x 12" (304.8 x 304.8mm)	100 x 0.02 lb/50 x 0.01 kg/50,000 x 10 gm/1,600 x 0.50 oz	with attachment bracket	26 lb (12 kg)
63059...	12" x 12" (304.8 x 304.8mm)	100 x 0.02 lb/50 x 0.01 kg/50,000 x 10 gm/1,600 x 0.50 oz	with 12" column	28 lb (13 kg)
63064...	12" x 12" (304.8 x 304.8mm)	100 x 0.02 lb/50 x 0.01 kg/50,000 x 10 gm/1,600 x 0.50 oz	with tilt stand	26 lb (12 kg)
Indicator Only				
65137...	IQ plus 210 with tilt stand, 115 VAC			9.3 lb (4.2 kg)
65138...	IQ plus 210 with tilt stand, 230 VAC			9.3 lb (4.2 kg)

See price page BCS-5 (P) for IQ plus 2100SL part numbers and pricing

SURVIVOR® CW-80 Over/Under Checkweigher



Measurement
Canada
Approved

(SEE CHART ON BACK OF PAGE FOR PART #'S)

The SURVIVOR CW-80 features a new generation Tough-Touch™ keypad, designed to withstand the most demanding industrial applications. International symbols and an extra-bright, rapid response display make the CW-80 instantly readable in almost any environment.

A true NEMA 4X/IP66 indicator enclosure is designed to seal out moisture and contaminants. The exclusive LifeGuard™ shock-absorbing base provides exceptional protection against overload and impact forces on 10" x 10" and 12" x 12" platforms. A stainless steel load cell resists corrosion for long life in washdown applications (6-60 lb capacities only).

Making operation possible virtually anywhere, the CW-80 offers 115 VAC or 230 VAC power configurations, and optional battery "backup power" with one of three available outputs. Battery backup power eliminates down time due to power failure, and supports limited portability. Optional RS-485 communication enables interfacing to a computer network, while the transaction memory buffer saves the last weighments for network retrieval and analysis.

Applications

- Food processing
- Industrial processing
- Kit assembly operations
- General filling operations
- General purpose weighing

Standard Features

- Large, bold 0.8" LED rapid-response display
- Industrial-quality 304 stainless steel construction
- Rugged 5-point overload protection on platform bases
- LifeGuard™ shock-absorbing bases on 6 lb to 100 lb capacities in base sizes up to 12" x 12"
- Highly-durable and corrosion-resistant stainless steel load cell on 6 lb to 60 lb capacities
- Field-proven aluminum load cell on 100 lb to 1000 lb capacities
- NEMA 4X/IP66 indicator enclosure
- ToughTouch™ industrial touch-control front panel with keys for over, under, tare, zero, units, print, target and ID
- Front-panel "Independent Key Disabling" for: OVER, UNDER, TARE, PRINT and UNITS keys
- Displays units in decimal lb, kg, oz, lb & oz, grams
- Annunciator lights for unit selection
- High-intensity LED for over, under and accept
- Storage for up to 300 tare and tolerance settings
- Automatic zero tracking
- 115 or 230 VAC operation
- Bidirectional RS-232 and/or simplex 20mA current loop communication

Options/Accessories

ELECTRONICS:

Option A 230 VAC operation

OUTPUTS:

Option B 3 TTL level setpoints

Option C ... 3 normally-open relays

Option D ... 3 normally-closed relays

Option E 3 TTL level setpoints with 6V battery backup power supply

Option F 3 normally-open relays with 6V battery backup power supply

Option G ... 3 normally-closed relays with 6V battery backup power supply

SOFTWARE:

Option H ... RS-485 communication

HARDWARE:

Option I* 12" column replacing standard column

Option J* ... 18" column replacing standard column

Option K* .. 24" column replacing standard column

Option L* ... 30" column replacing standard column

Option M ... Combination desk/wall mount bracket

Option N ... 10" x 10" cutting board, white food-grade plastic

Option O ... 12" x 12" cutting board, white food-grade plastic

Option P 304 stainless steel clamshell load cell protection, 12" x 12" model, 100 lb capacity only

41292 304 stainless steel clamshell load cell protection for capacities of 100 lb and over

* Please note if you are ordering the column without the scale refer to the Replacement Parts Catalog for necessary components and pricing.

Please consult factory for pricing if your application requires hermetically sealed load cells.

DISPLAY:

Large 0.8" 7-segment, 6-digit high-intensity red LED display, Decimal point available at each digit

STATUS ANNUNCIATORS:

lb, kg, g, net, motion, center of zero, neg

KEYBOARD:

8-key tough control with international symbols

BAR GRAPH:

5-segment, 7-range programmable multicolored array tracks
Over, Under, Accept status in relation to target value

INTERNAL RESOLUTION:

50,000 to 1,000,000 based on filtering selection

DISPLAY RESOLUTION:

Selectable up to 50,000 dd

MEASUREMENT RATE:

25 updates/second

SYSTEM LINEARITY:

0.01% of F.S.

ZERO STABILITY:

100 nV/°C maximum

SPAN STABILITY:

3ppm/°C maximum

AZM (ZERO TRACK):

off, ±.5, 1, 2 or 3 dd

OPERATIONAL AZM:

±2% or 100% F.S

MOTION BAND:

Off, .5, 1, 2, 3, 5, 10 dd

CALIBRATION METHOD:

Software

EXCITATION VOLTAGE:

10 ± .05 VDC, 4 x 350Ω load cell

DIGITAL FILTER:

Software selectable 1, 2, 4, 8, 16, 32, 64, 128

SENSE AMPLIFIER:

Differential amplifier with 6-wire sensing

RFI PROTECTION:

Signal, excitation and sense lines protection. 33V/m for 100 kHz to 1 GHz, ≤1 μV susceptibility

DIGITAL OUTPUTS:

(Optional) 3 TTL outputs (5VDC) or 3 N/O relays (10 watts, 0.5 amp, 100 VDC) or 3 N/C relays to (10 watts, 0.5 amp, 100 VDC)

EPD PORT:

Full duplex, RS-232 or 20 mA simplex output (RS-485 optional)

LINE VOLTAGES:

Available in 115 or 230 VAC (nom.) models

FREQUENCY:

50 or 60 Hz

OPERATING TEMPERATURE:

14°F to 104°F (-10°C to 40°C)

INDICATOR DIMENSIONS:

9.5" W x 8.5" H x 3.25" D (241mm x 216mm 83)

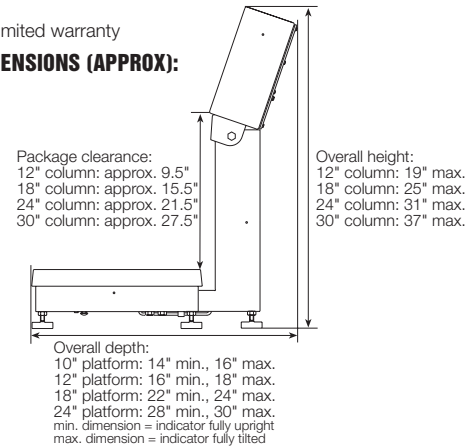
APPROVALS:

System approved to 3,000 divisions, NTEP-certified per H-44; Indicator, 10,000d, Class III/IIIL, CC #96-118A1, Base, CC #96-107. Measurement Canada approved: Indicator, AM-5146, Base, AM-5156, OIML certificate #R76/1992-DE-97.02, UL & C-UL listed, CE marked

WARRANTY:

Two year limited warranty

OVERALL DIMENSIONS (APPROX):



PART #	CAPACITY LB (KG)	PLATFORM DIMENSIONS INCHES (MM)	COLUMN HT. INCHES (MM)	SHIP WEIGHT LB (KG)
35113	6 lb x .002 (3 kg x .001) 96 oz x .05	10" L x 10" W x 3" H (254mm L x 254mm W x 77mm H)	12" (305mm)	20 lb (8.8 kg)
35114	10 lb x .005 (5 kg x .002) 160 oz x .1	10" L x 10" W x 3" H (254mm L x 254mm W x 77mm H)	12" (305mm)	20 lb (8.8 kg)
35115	15 lb x .005 (7 kg x .002) 240 oz x .1	10" L x 10" W x 3" H (254mm L x 254mm W x 77mm H)	12" (305mm)	20 lb (8.8 kg)
35116	30 lb x .01 (15 kg x .005) 480 oz x .2	10" L x 10" W x 3" H (254mm L x 254mm W x 77mm H)	12" (305mm)	20 lb (8.8 kg)
35121	30 lb x .01 (15 kg x .005) 480 oz x .2	12" L x 12" W x 3" H (305mm L x 305mm W x 77mm H)	12" (305mm)	23 lb (10.4 kg)
35122	60 lb x .02 (30 kg x .01) 960 oz x .5	12" L x 12" W x 3" H (305mm L x 305mm W x 77mm H)	12" (305mm)	23 lb (10.4 kg)
35175	100 lb x .02 (50 kg x .01) 1600 oz x .5	12" L x 12" W x 3" H (305mm L x 305mm W x 77mm H)	12" (305mm)	23 lb (10.4 kg)
35176	100 lb x .02 (50 kg x .01) 1600 oz x .5	18" L x 18" W x 5.25" H (457mm L x 457mm W x 134mm H)	18" (458mm)	78 lb (35.4 kg)
35177	200 lb x .05 (100 kg x .02) 3200 oz x 1	18" L x 18" W x 5.25" H (457mm L x 457mm W x 134mm H)	18" (458mm)	78 lb (35.4 kg)
35178	300 lb x .1 (150 kg x .05) 4800 oz x 2	18" L x 18" W x 5.25" H (457mm L x 457mm W x 134mm H)	18" (458mm)	78 lb (35.4 kg)
35179	500 lb x .1 (250 kg x .05) 8000 oz x 2	18" L x 18" W x 5.25" H (457mm L x 457mm W x 134mm H)	18" (458mm)	78 lb (35.4 kg)
35181	200 lb x .1 (100 kg x .05) 3200 oz x 2	24" L x 18" W x 5.25" H (610mm L x 457mm W x 134mm H)	18" (472mm)	95 lb (43.1 kg)
35182	300 lb x .1 (150 kg x .05) 4800 oz x 2	24" L x 18" W x 5.25" H (610mm L x 457mm W x 134mm H)	18" (472mm)	95 lb (43.1 kg)
35183	500 lb x .1 (250 kg x .05) 8000 oz x 5	24" L x 18" W x 5.25" H (610mm L x 457mm W x 134mm H)	18" (472mm)	95 lb (43.1 kg)
35184	1000 lb x .2 (500 kg x .1) 16000 oz x 5	24" L x 18" W x 5.25" H (610mm L x 457mm W x 134mm H)	18" (472mm)	95 lb (43.1 kg)
35185	200 lb x .05 (100 kg x .02) 3200 oz x 1	24" L x 24" W x 5.25" H (610mm L x 610mm W x 134mm H)	18" (472mm)	110 lb (49.9 kg)
35186	300 lb x .1 (150 kg x .05) 4800 oz x 2	24" L x 24" W x 5.25" H (610mm L x 610mm W x 134mm H)	18" (472mm)	110 lb (49.9 kg)
35187	500 lb x .1 (250 kg x .05) 8000 oz x 2	24" L x 24" W x 5.25" H (610mm L x 610mm W x 134mm H)	18" (472mm)	110 lb (49.9 kg)
35188	100 lb x .2 (50 kg x .1) 16000 oz x 5	24" L x 24" W x 5.25" H (610mm L x 610mm W x 134mm H)	18" (472mm)	110 lb (49.9 kg)
KG ONLY (230 VAC)				
66682	3 kg x .001	10" L x 10" W x 3" H (254mm L x 254mm W x 77mm H)	12" (305mm)	20 lb (8.8 kg)
66681	5 kg x .002	10" L x 10" W x 3" H (254mm L x 254mm W x 77mm H)	12" (305mm)	20 lb (8.8 kg)
66680	7.5 kg x .005	10" L x 10" W x 3" H (254mm L x 254mm W x 77mm H)	12" (305mm)	20 lb (8.8 kg)
68667	7.5 kg x .005	10" L x 10" W x 3" H (254mm L x 254mm W x 77mm H)	3" (76.2mm)	20 lb (8.8 kg)
OIML CERTIFIED (230 VAC)				
51200	30 lb x .01 (15 kg x .005) 480 oz x .2	10" L x 10" W x 3" H (254mm L x 254mm W x 77mm H)	12" (305mm)	20 lb (8.8 kg)
51201	30 lb x .01 (15 kg x .005) 480 oz x .2	12" L x 12" W x 3" H (305mm L x 305mm W x 77mm H)	12" (305mm)	23 lb (10.4 kg)
51202	60 lb x .02 (30 kg x .01) 960 oz x .5	12" L x 12" W x 3" H (305mm L x 305mm W x 77mm H)	12" (305mm)	23 lb (10.4 kg)

Kubota KA-100 Series

Battery-Powered Platform Scales



PART #	DESCRIPTION
51059 KA-100, 150 lb (60kg)
51060 KA-100, 300 lb (150kg)



Applications

- Shipping and Receiving
- Recycling
- Material Handling

Standard Features

- Capacities: 150 lb and 300 lb
- Automatic "auto ranging" to adjust division size based on capacity
- Large Liquid Crystal Display (LCD), 1.7" (43mm) character height
- Long battery life of approximately 1,000 hours.
- Ability to toggle between lb and kg from operating mode
- Auto Tare can tare up to 100% of scale capacity
- Over/under checkweighing displays instant "HI", "LO", or "OK" readout
- Counting function with selectable sampling

Options/Accessories

- 16413 AC Adapter, model 5268

The new KA-100 Kubota Bench Scale is ideal for shipping/receiving, recycling, and material handling applications. This functional scale has a large display that provides easy readability from any angle. Additionally, it features an extra-long battery life—approximately 1,000 hours on 6 D-cell batteries. It is available in 150 lb and 300 lb capacities and includes an automatic power-off function for operator convenience.

A handy counting function can be used to automatically count the number of items on the platform. An over/under checkweighing function is available to monitor product weight for the maximum or minimum weight allowance.

CAPACITY:

150 lb, 300 lb

DIVISIONS (AUTO RANGING):

150 lb: 0.02 lb from 0 lb - 60 lb, 0.05 lb from 60 lb - 150 lb

300 lb: 0.05 lb from 0 lb - 150 lb, 0.1 lb from 150 lb - 300 lb

MAX. TARE WEIGHT:

150 lb, 300 lb

SIZE OF PLATFORM:

14.6" (370mm) x 19.7" (500mm)

WEIGHT INDICATOR:Liquid Crystal Display (LCD), 5 digits, character height: 1.7"
(43mm), 7 segment characters**FUNCTIONS:**

Zero reset

Taring

Preset Taring

Upper and lower limit comparison

Counting

Net / Gross weight display switching

Auto power-off

NUMBER OF SAMPLINGS:

5, 10, 20, 50, or 100 (selectable)

MAXIMUM PIECE COUNT:

150 lb: approx. 12,000

300 lb: approx. 15,000

OPERATING TEMPERATURE:

14° F to 104° F (-10 °C) to (40 °C)

POWER SUPPLY:6 D-cell Alkaline Batteries (batteries not included),
optional AC Adapter**BATTERY LIFE:**

Approx. 1,000 hours at 77°F

NET WEIGHT:

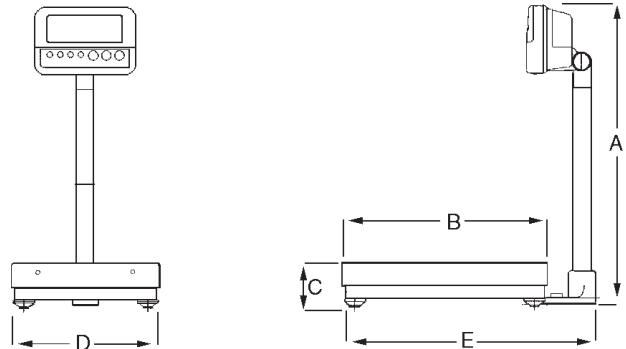
Approx. 28.67 lb (14 kg)

APPROVALS:

NTEP #98-184 Class III 1:3000

WARRANTY:

One year limited warranty

**DIMENSIONS**

A = 28.7" - 29.5" (730mm - 750mm)

B = 19.7" (500mm)

C = 4.02" - 4.8" (102mm - 122mm)

D = 14.6" (370mm)

E = 24.9" (633mm)

Kubota KA-10HB Series

Battery-Powered Platform Scales



PART #	DESCRIPTION
19695 KA-10HB-70L-A
19696 KA-10HB-150L-A
19697 KA-10HB-300L-A



The KA-10HB Series offers lightweight, versatile and economical scales designed for use in a wide variety of weighing applications, including agricultural, marine, industrial, and chemical. Portability and counting capability make the KA-10HB perfect for many rental applications, as well as permanent shipping room uses.

Its functional, attractive design makes this scale an easy fit in any setting, from a contemporary medical office to a dock-side fish market.

Applications

- Agricultural
- Marine
- Industrial
- Chemical
- Rental application

Standard Features

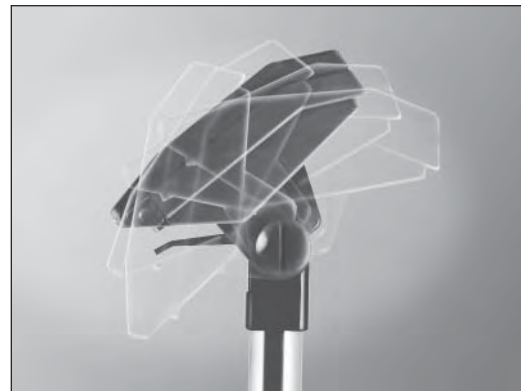
- Low power consumption—140-300 hours on six C-cell batteries
- Lightweight for easy portability; only 33 lb for 150 lb capacity scale
- System expandability, with a complete line of options available
- Over/under checkweighing displays instant "HI", "LO", or "OK" readout
- Counting function up to 3000 items at minimum unit weight
- Enhanced counting capability—1 part in 15,000 resolution
- Auto tare can tare up to 100% of scale capacity
- "Easy wash" platform drip-proof design for easy cleanup
- Wide weighing range capacities from 70 to 300 lb
- High-visibility LCD display displays weight in lb, kg or piece count

Options/Accessories

- 16413 AC Adapter Model 5268
- 16850 Additional operating manual
- 16841 Technical/service manual

Swivel Head Design

Allows maximum readability from almost any angle. Indicator can also be remotely mounted up to 20 ft. away from the platform.



Display of Weight (kg or lb)

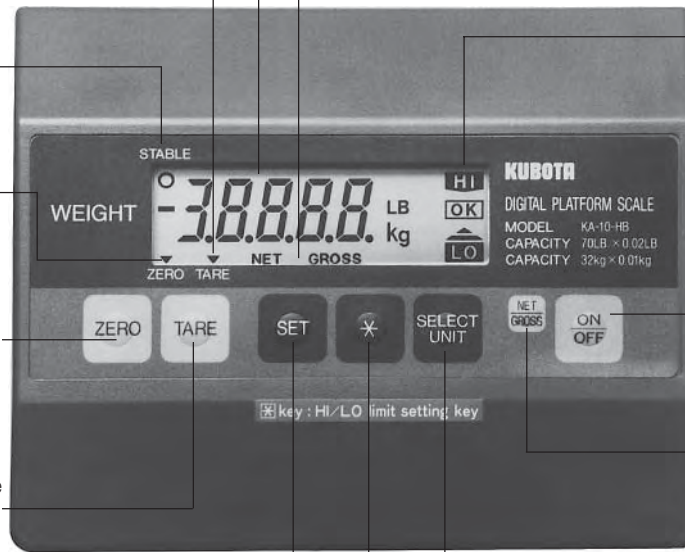
Tare Mark (▼) is shown when taring.

Stable Mark (O) motion detection.

Zero Mark (▼) is shown when display is at the center of zero.

Zero Key instantly zeroes scale.

Tare Key subtracts weight of tare (dishes, ect.) up to the maximum capacity.



Net/Gross Mark is shown to indicate the weight mode.

Over-Under Checkweighing Display: HI, OK, and LO are displayed when the comparator mode is available.

HI - Scale value is > than maximum setting.
OK - Scale value is \leq maximum setting and \geq minimum setting.
LO - Scale value is < minimum setting.

ON/OFF Key - The display power automatically shuts off after "zero" display remains on for three minutes.

NET/GROSS Key changes the weight mode to and from Net or Gross.

SELECT UNIT Key in the Straight-Weighing Mode, does LB/KG conversions. In the Over/Under Mode, selects HI and LO setup parameters.

Set Key changes operating modes between over/under and straight weighing, or between counting and straight weighing (counting mode requires factory modification).

*** Key** has two different functions:
1. Comparator Mode: to input the setpoint values after selecting the digit by using the Set Key.
2. Counting Mode Option: changes the sample size from 10 to 20 or 50 samples (requires factory modification).

APPROVALS:

NTEP-certified per H-44, Class III, 3500d, CC#88-019

WARRANTY:

One year limited warranty

DIMENSIONS

PART #	MODEL #	CAPACITY LB (KG)	PLATFORM DIMENSIONS INCHES (MM)	SHIP WEIGHT LB (KG)
19695	KA-10HB-70L-A	70 lb x .02 (32 kg x .01)	20" L x 14" W x 4" H (508mm L x 355.6mm W x 101.6mm H)	33 lb (15 kg)
19696	KA-10HB-150L-A	150 lb x .05 (60 kg x .02)	20" L x 14" W x 4" H (508mm L x 355.6mm W x 101.6mm H)	33 lb (15 kg)
19697	KA-10HB-300L-A	300 lb x .1 (150 kg x .05)	20" L x 14" W x 4" H (508mm L x 355.6mm W x 101.6mm H)	37 lb (16.8 kg)

MTX/MTB Series Bench Scales



MTB-60L

MTX-300L

PART # DESCRIPTION

41446	MTX-60L, 60 lb, 30 lb, 15 lb
41450	MTB-60L, 60 lb, 30 lb, 15 lb
41447	MTX-300L, 300 lb, 150 lb, 60 lb
41451	MTB-300L, 300 lb, 150 lb, 60 lb

With multiple weighing ranges that can be changed with the touch of a key, the MTX/B Series can boost operational efficiency anywhere.

Weight verification, product counting, and data management will completely change the way you do business.

Applications

- Shipping & receiving areas
- Industrial processing

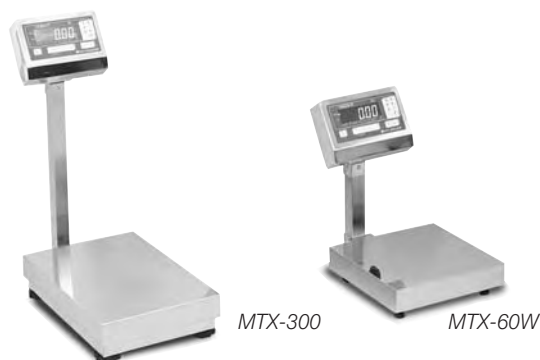
Standard Features

- Easy-to-read rotating display
- Liquid Crystal Display (LCD), (MTB models)
- Vacuum Fluorescent Display (VFD) (MTX models)
- Stainless steel platform cover
- Multiple weighing ranges
- Weight verification
- Counting & checkweighing modes
- Battery powered with 6 D-cell batteries (MTB models)

Options/Accessories

- 45101 Roller conveyor, front to back (MTX-300)
- 41817 Built-in journal printer (MTX models)
- 41814 RS-232 interface (MTX models)
- 42231 Additional operating manual

MTX-W Series “Splash-Proof” Bench Scales



MTX-300

MTX-60W

PART # DESCRIPTION

41448	MTX-60W, 60 lb
41449	MTX-300W, 300 lb



Ideal for food processing applications, the MTX-W Series is constructed of water resistant stainless steel.

The MTX-W Series offers several advanced features, including weight verification, product counting, data management, multiple weighing ranges and much more.

Applications

- Food processing
- Light washdown environments

Standard Features

- Easy-to-read adjustable display
- Vacuum Fluorescent Display (VFD)
- Stainless steel platform cover and indicator enclosure
- Multiple weighing ranges
- Weight verification
- Product counting
- Data management

Options/Accessories

- 42233 Additional operating manual

MTX-60L & MTX-300L:

DISPLAY:

Vacuum Fluorescent Display (VFD)

DISPLAY ITEMS:

Weight: 5 digits

Zero Point: ◀

Tare: ◀

Weight Check: over orange
accept green
under red

Capacity: green

Counting mode: orange

POWER CONSUMPTION:

6 watts

ELECTRICAL POWER:

AC, 115V, 10%, 50/60 Hz

CAPACITY:

60 lb, 30 lb, 15 lb (triple range) (MTX-60L)

300 lb, 150 lb, 60 lb (triple range) (MTX-300L)

MINIMUM GRADUATION:

0.02 lb, 0.01 lb, 0.005 lb, (MTX-60L)

0.1 lb, 0.05 lb, 0.02 lb, (MTX-300L)

WEIGHT:

27 lb (13 kg), MTX-60L

42 lb (19 kg), MTX-300L

DIMENSIONS:

13" x 12.25" x 3.5", MTX-60L

13.8" x 19.6" x 4.5", MTX-300L

APPROVALS:

NTEP certified per H-44, Class III, 3000d; CC #96-080A1,

USDA approved

WARRANTY:

One year limited warranty

MTB-60L & MTB-300L:

DISPLAY:

Liquid Crystal Display (LCD)

DISPLAY ITEMS:

Weight: 5 digits

Zero Point: ◀

Tare: ◀

Stability: *

Weight Check ▶: over, accept, under

Battery replacement: **B**

Capacity: ▼

Counting mode: ▼

POWER CONSUMPTION:

0.07 watts

ELECTRICAL POWER:

6 D-cell batteries (R20)

CAPACITY:

60 lb, 30 lb (dual range) (MTB-60L)

300 lb, 150 lb (dual range) (MTB-300L)

MINIMUM GRADUATION:

0.02 lb, 0.01 lb (MTB-60L)

0.1 lb, 0.05 lb (MTB-300L)

WEIGHT:

27 lb (13 kg), MTB-60L

42 lb (19 kg), MTB-300L

DIMENSIONS:

13" x 12.25" x 3.5", MTB-60L

13.8" x 19.6" x 4.5", MTB-300L

APPROVALS:

NTEP-certified per H-44, Class III, 3000d; CC #96-080A1

WARRANTY:

One year limited warranty

DISPLAY:

Vacuum Fluorescent Display (VFD)

DISPLAY ITEMS:

Weight: 5 digits

Zero Point: ◀

Tare: ◀

Weight Check: over orange
accept green
under red

Capacity: green

Counting mode: orange

POWER CONSUMPTION:

6 watts

ELECTRICAL POWER:

AC 115V, 10%, 50/60 Hz

OPERATING TEMPERATURE:

23°F to 104°F (-5°C to 40°C)

HUMIDITY:

20 - 85%

CAPACITY:

60 lb, 30 lb, 15 lb (triple range) (MTX-60W)

300 lb, 150 lb, 60 lb (triple range) (MTX-300W)

MINIMUM GRADUATION:

0.02 lb, 0.01 lb, 0.005 lb (MTX-60W)

0.1 lb, 0.05 lb, 0.02 lb (MTX-300W)

WEIGHT:

27 lb (13 kg), MTX-60W

42 lb (19 kg), MTX-300W

DIMENSIONS:

13" x 12.25" x 3.5", MTX-60W

13.8" x 19.6" x 4.5", MTX-300W

APPROVALS:

NTEP-certified per H-44, Class III, 3000d; CC #96-080A1, UL

and C-UL listed

WARRANTY:

One year limited warranty

MTE Series Bench Scale



PART #	DESCRIPTION
41452	MTE-300d, fixed "head" die cast cover and base, 300 lb (150 kg)
41453	MTE-300, fixed "head" stainless steel cover and die cast base, 300 lb (150 kg)

The MTE-300 is the most cost effective digital platform scale in its class.

It offers a simple tare function with an easy-to-read display and a checkweighing function that simplifies controls.



Applications

- Shipping and receiving
- Industrial processing

Standard Features

- Easy-to-read Vacuum Fluorescent Display (VFD)
- Stainless steel or die cast platform base
- Weight verification
- Simple tare function
- 115 VAC power cord

Options/Accessories

- 48716 Tilt stand
- 42230 Additional operating manual

MG-3000 Series Checkweigher



PART #	DESCRIPTION
41445	MG-3000, 15 lb



This compact, water-resistant scale provides quick, accurate weighments and an easy-to-read color bar graph display.

The MG-3000 over/under checkweigher is designed to meet increasing demands for strong, durable, and easy-to-use scales to weigh product such as fish, meat and frozen foods.

Applications

- Food processing
- Light washdown environments

Standard Features

- Color bar graph display
- Large Liquid Crystal Display (LCD)
- Stainless steel exterior & platform
- Compact design
- Easy dual-range selection
- Over/under weight verifier
- AC adapter
- Set tare by weight or digital entry

Options/Accessories

- 41635 Built-in NiCad battery
- 42227 RS-232 interface battery
- 42234 Additional operating manual

CWS Series Portable Bench Scale



CWS-10

PART #	DESCRIPTION
41466	CWS-5 lb
41467	CWS-10 lb
41468	CWS-20 lb
41469	CWS-50 lb
41923*	CWS-5 lb/oz
41924*	CWS-10 lb/oz
41925*	CWS-19 lb/oz



* Lb/oz display versions cannot be converted to kg-only or lb-only display. Lb/oz versions are NTEP for postal use only.

The CWS Series is a battery-powered, easy-to-use digital bench scale.

It can be used anywhere and provides highly reliable weighing data any time. A variety of power-conserving functions assure optimum battery use.

Applications

- Parcel weighing
- Light industrial weighing
- Portion weighing

Standard Features

- LCD display
- Stand-by mode
- Auto power-off function
- Low battery indicator
- Weighing
- Battery-powered, low power consumption design (1,000-hour life cycle with 6 D-cell batteries)

Options/Accessories

- 42228 Additional operating manual
- 44063 Stainless steel top plate

MTE Series

Specifications

CAPACITY:

300 lb (150 kg)

MINIMUM GRADUATION:

0.1 lb (50 g)

ACCURACY:

1/3000

WEIGH METHOD:

Strain-gauge load cell

DISPLAY:

Vacuum Fluorescent Display (VFD)

DISPLAY ITEMS:

Weight: 5 digits

Center of zero

Tare

Checkweighing: Over "H", Under "L"

POWER CONSUMPTION:

6 watts

ELECTRICAL POWER:

115 VAC \pm 10%, 50 Hz

WEIGHT:

48 lb (22 kg)

DIMENSIONS:

15.5" x 21.6" x 3.2"

OPERATING TEMPERATURE:

14°F to 104°F (-10°C to 40°C)

APPROVALS:

NTEP certified per H-44, Class III, 3000d; CC#98-067

WARRANTY:

One year limited warranty

MG-3000 Series

Specifications

CAPACITY:

15 lb

MINIMUM GRADUATION:

0.005 lb

DISPLAY:

Liquid Crystal Display (LCD)

DISPLAY ITEMS:

Weight: 5 digits

Bar graph: 31 bars

Under/Over: $\leftarrow \rightarrow$

Units: lb, kg, oz

Zeros: \blacktriangleleft

Values set: \blacktriangleleft

Tare: \blacktriangleleft

Set mode: \star

TARE

Set by actual weight via [TARE]

Set digitally via [TARE], [CHG/VAL] and [SET/COL]

Tare value limited to scale capacity

TARGET, UPPER LIMIT:

Set by actual weight via [SET] and [CHG/VAL]

Set digitally via [SET] and [CHG/VAL]

POWER SOURCE:

AC 115V \pm 10% (AC adapter)

MATERIAL:

Stainless steel exterior

WEIGHT:

12 lb (6 kg)

PLATFORM DIMENSIONS:

10" L x 8" W

OPERATING TEMPERATURES:

14°F to 104°F (-10°C to 40°C)

APPROVALS:

NTEP certified per H-44, Class III, 3000d;

CC #91-121

WARRANTY:

One year limited warranty

CWS Series

Specifications

CWS SERIES CAPACITY/GRADUATION:

CWS-5 lb: 2000 g x 2 g, 2 kg x 0.002 kg, 100 oz x 0.1 oz,
5 lb x 0.005 lb

CWS-10 lb: 5000 g x 5 g, 5 kg x 0.005 kg, 200 oz. x 0.2 oz.,
10 lb x 0.01 lb

CWS-20 lb: 10 kg x 0.01 kg, 20 lb x 0.02 lb

CWS-50 lb: 20 kg x 0.02 kg, 50 lb x 0.05 lb

WEIGHT:

6 lb (3 kg)

DIMENSIONS:

Overall: 9.5" x 7.1" x 9.7" (240mm x 180mm x 245mm)

Plate: 7.9" x 8.9" (200mm x 224mm)

ELECTRICAL POWER:

6 D-cell batteries (R20)

APPROVALS:

NTEP certified per H-44, Class III, 1000d; CC #94-018

WARRANTY:

One year limited warranty

IQ 9500 Series Counting Scale



IQ 9500
Single Platform

IQ 9500 Dual Platform

(SEE CHART ON BACK OF PAGE FOR ADDITIONAL PART #'S)

Featuring a sophisticated design that provides flexibility as well as easy operation, the IQ 9500 counting scale is designed to exceed your customer's counting needs.

From quality and inventory control to shipping and receiving, the IQ 9500 provides industry-leading accuracy and repeatability for a variety of counting applications. A weighing resolution of 1/10,000 and a counting (internal) resolution of 1/1,000,000 provide high-accuracy performance without the high-end price tag. User accuracy is enhanced with features like an easy-to-operate keypad, three vibrant fluorescent displays that show weight, unit weight and quantity simultaneously, and the choice of unit weight/1000 or average piece weight (APW) modes.

Each scale contains the hardware to accommodate the options and accessories customers demand. Three RS-232 ports allow connection to peripherals such as bar code laser or pen scanners, Eltron bar code printers, ticket or tape printers, and a PC. Just tell us your customer's application requirements, and we will help you complete the package.

Providing convenience in any application, the indicator head can be unlatched from the base for pole, wall mount or remote use. Enhanced data collection opportunities and portability are available with 200-item memory and an optional rechargeable battery.

More than just a counting scale, the IQ 9500 provides customers with precision weight-based inventory and data management.

Applications

- Inventory and quality control
- Parts packaging
- Shipping and receiving

Standard Features

- 1/1,000,000 counting (internal) resolution
- 1/10,000 weighing resolution
- Three fluorescent displays for weight, unit weight and quantity
- Up to four scale operation (three scales and one force balance)
- AC or battery operation (battery is optional)
- Three RS-232 ports for connecting to peripherals such as Eltron bar code printers, ticket/tape printers, bar code laser/pen scanners, PCs, and a force balance
- 200-item recall
- Up to six setpoints (TTL logic)

Options/Accessories

- 31793** AC power supply adapter, 115 VAC (only required when ordering part number 64842)
- 32479** AC power supply adapter, 230 VAC (only required when ordering part number 64842)
- 53826** 20" high column assembly
- 53827** Rechargeable battery pack, 4 hours continuous use (lead acid type)
- 53828** Multi-scale "Y" cable
- 32375**** ... Remote scale connector
- 35319*** 20' RoughDeck home run cable w/remote scale connector installed
- 23113** TM-U295 ticket printer, 115 VAC/230 VAC
- 34492** TM-U200 tape printer, 115 VAC
- 34469** TM-U200 tape printer, 230 VAC
- 53120** Eltron LP-2722 direct thermal printer (115 VAC)
- 53124** Eltron LP-2722 direct thermal printer (230 VAC)
- 65617** Direct Thermal labels, 2.25" W x 4.50" L, 5" roll diameter, 600 labels/roll, perforated, 1" core size
- 64660** 5' RS-232 cable, 9-pin D-sub male to 9-pin D-sub male (Eltron printer)
- 64661** 5' RS-232 cable, 8-pin DIN male to 9-pin D-sub male (Eltron printer)
- 41279** 5' RS-232 cable, 9-pin D-sub male to 25-pin D-sub male (TM-U295 or TM-U200)
- 32810** 5' RS-232 cable, 8-pin DIN male to 25-pin D-sub male (TM-U295 or TM-U200)
- 65616** Wand, RS-232 decoded, 6 mil visible light
- 65317** CCD Scanner, Denset, scan width up to 4.5", RS-232 w/8-pin DIN connector
- 65619** QS6000, KBN, RS-232 cable, power supply, cable to connect to IQ 9500

53785*** .. Additional operating manual
Please refer to our **BenchMark™ bench scales and RoughDeck™ floor scales for remote platform options.**

† Required in three-channel system when channels #1 and #2 are not a dual channel platform.

* Not designed to be used with Y-cable

** This connector needs to be installed on the load cell cable of any remote base. (i.e. bench scale load cell, or floor scale)

*** Authorized distributors can download for free from www.rlws.com

WEIGHT DISPLAY RESOLUTION:

1/10000, 1/5000, 1/2500

COUNTING RESOLUTION:

1/1,000,000

POWER SOURCE:

115 VAC or 230 VAC, 50/60 Hz

POWER CONSUMPTION:

20 W

INPUT SENSITIVITY:

0.40-4.00 mV/V

ZERO ADJUST RANGE:

100% full scale

A/D CONVERSION RATE:

10 times per second

LOAD CELL EXCITATION:

12 V DC

NUMBER OF SCALE CHANNELS:

Up to four scales can be connected (three load cell scales and one force balance)

NUMBER OF LOAD CELLS PER REMOTE PLATFORM SCALE:

4 x 350Ω load cells

WEIGHT DISPLAY:

Five digits

UNIT WEIGHT DISPLAY:

Five digits

QUANTITY DISPLAY:

Seven digits

MEMORY ITEMS:

200 items maximum

LOAD CELL INPUT CONNECTOR:

Amphenol 14-pin

BAR CODE SCANNER CONNECTOR:

DIN 8-pin (RS-232)

LAB BALANCE, PC OR BAR CODE LABEL PRINTER CONNECTOR:

DIN 8-pin (RS-232) or D-sub 9-pin (RS-232)

SETPOINT OUTPUT CONNECTOR:

Mini DIN 8-pin

OPERATING TEMPERATURE:

14°F to 104°F (-10°C to 40°C)

DIMENSIONS:

Pole type: 16.4" W x 16.5" L x 17.9" H
(416mm W x 419mm L x 454mm H)

Bench type: 16.4" W x 17.1" L x 4.9" H
(416mm W x 434mm L x 124mm H)

WEIGHT:

Pole type: 19.4 lb (8.8 kg)

Bench type: 17.6 lb (8 kg)

WARRANTY:

One year limited warranty

IQ 9500 SERIES

PART #	CAPACITY	INTERNAL RESOLUTION	PLATTER DIMENSIONS
Single Scale - 115 VAC (Includes scale platform & console)			
53802	0.5 lb/0.25 kg	0.0000005 lb (0.0000002 kg)	6" x 8" (152 x 203mm)
53803	1 lb/0.5 kg	0.000001 lb (0.0000005 kg)	6" x 8" (152 x 203mm)
53804	2.5 lb/1.0 kg	0.0000025 lb (0.000001 kg)	7" x 10" (177 x 254mm)
53805	5 lb/2.5 kg	0.000005 lb (0.0000025 kg)	11" x 16" (279 x 406mm)
53806	10 lb/5.0 kg	0.00001 lb (0.000005 kg)	11" x 16" (279 x 406mm)
53807	25 lb/10.0 kg	0.000025 lb (0.00001 kg)	11" x 16" (279 x 406mm)
53808	50 lb/25.0 kg	0.00005 lb (0.000025 kg)	11" x 16" (279 x 406mm)
53809	100 lb/50.0 kg	0.0001 lb (0.00005 kg)	11" x 16" (279 x 406mm)
Single Scale - 230 VAC (Includes scale platform & console)			
65152	0.5 lb/0.25 kg	0.0000005 lb (0.0000002 kg)	6" x 8" (152 x 203mm)
65151	1 lb/0.5 kg	0.000001 lb (0.0000005 kg)	6" x 8" (152 x 203mm)
65150	2.5 lb/1.0 kg	0.0000025 lb (0.000001 kg)	7" x 10" (177 x 254mm)
65149	5 lb/2.5 kg	0.000005 lb (0.0000025 kg)	11" x 16" (279 x 406mm)
65148	10 lb/5.0 kg	0.00001 lb (0.000005 kg)	11" x 16" (279 x 406mm)
65147	25 lb/10.0 kg	0.000025 lb (0.00001 kg)	11" x 16" (279 x 406mm)
65146	50 lb/25.0 kg	0.00005 lb (0.000025 kg)	11" x 16" (279 x 406mm)
65146	100 lb/50.0 kg	0.0001 lb (0.00005 kg)	11" x 16" (279 x 406mm)
Dual Scale - 115 VAC (Includes scale platform & console)			
53794	0.5/10 lb (0.25/5.0 kg)	0.0000005/0.00001 lb (0.0000002/0.000005 kg)	4" x 6"/9" x 12" (101 x 152/228 x 304mm)
53795	0.5/25 lb (0.25/10.0 kg)	0.0000005/0.000025 lb (0.0000002/0.00001 kg)	4" x 6"/9" x 12" (101 x 152/228 x 304mm)
53796	0.5/50 lb (0.25/25.0 kg)	0.0000005/0.00005 lb (0.0000002/0.000025 kg)	4" x 6"/9" x 12" (101 x 152/228 x 304mm)
53797	1/10 lb (0.5/5.0 kg)	0.000001/0.00001 lb (0.000001/0.000005 kg)	4" x 6"/9" x 12" (101 x 152/228 x 304mm)
53798	1/25 lb (0.5/10.0 kg)	0.000001/0.000025 lb (0.000001/0.000005 kg)	4" x 6"/9" x 12" (101 x 152/228 x 304mm)
53799	1/50 lb (0.5/25.0 kg)	0.000001/0.00005 lb (0.000001/0.000025 kg)	4" x 6"/9" x 12" (101 x 152/228 x 304mm)
65336	2.5/10 lb (1.0/5.0 kg)	0.0000025/0.00001 lb (0.000001/0.000005 kg)	4" x 6"/9" x 12" (101 x 152/228 x 304mm)
53800	2.5/25 lb (1.0/10.0 kg)	0.0000025/0.000025 lb (0.000001/0.00001 kg)	4" x 6"/9" x 12" (101 x 152/228 x 304mm)
53801	2.5/50 lb (1.0/25.0 kg)	0.0000025/0.00005 lb (0.000001/0.000025 kg)	4" x 6"/9" x 12" (101 x 152/228 x 304mm)
65335	5.0/10 lb (2.5/5.0 kg)	0.000005/0.00001 lb (0.000001/0.000005 kg)	4" x 6"/9" x 12" (101 x 152/228 x 304mm)
65334	5.0/25 lb (2.5/10.0 kg)	0.000005/0.000025 lb (0.000001/0.000005 kg)	4" x 6"/9" x 12" (101 x 152/228 x 304mm)
65333	5.0/50 lb (2.5/25.0 kg)	0.000005/0.00005 lb (0.000001/0.000025 kg)	4" x 6"/9" x 12" (101 x 152/228 x 304mm)
Dual Scale - 230 VAC			
<i>Consult factory for pricing and delivery.</i>			
Console Only			
64842	IQ 9500 (Requires part number 31793 or 32479 for power)		

CONDEC™ ECS 5000 Digital Counting Console



Designed for ease of installation and operation, the innovative ECS 5000 Counting Console offers a full function numerical keyboard providing user-friendly operation. The standard unit is available in 2 lb to 100 lb configuration with the capability of adding a second remote channel with capacities from 1 lb to 20,000 lb. More advanced features include the ECS 5000's full duplex serial output, configurable to provide up to seven fields of information including a keyed entry 6-digit ID number.

PART # DESCRIPTION (PART NUMBERING CHART ON BACK OF PAGE)

PART #	DESCRIPTION
115 VAC	
57125	ECS5000AAAA, 2 lb x 0.0002 lb, 115 VAC 50/60 Hz, local scale only, standard
57172	ECS5000AACA, 2 lb x 0.0002 lb, 115 VAC 50/60 Hz, remote scale option (AC only), standard
61995	ECS5000CACA, 10 lb x 0.001 lb, 115 VAC 50/60 Hz, remote scale only (AC only), standard
62016	ECS5000CADA, 10 lb x 0.001 lb, 115 VAC 50/60 Hz, remote scale only with lb/kg switch (AC only), standard
61172	ECS5000DAAA, 25 lb x 0.002 lb, 115 VAC 50/60 Hz, local scale only, standard
61218	ECS5000DADA, 25 lb x 0.002 lb, 115 VAC 50/60 Hz, remote scale option with lb/kg switch (AC only), standard
61941	ECS5000EAAA, 50 lb x 0.005 lb, 115 VAC 50/60 Hz, local scale only, standard
61973	ECS5000EACA, 50 lb x 0.005 lb, 115 VAC 50/60 Hz, remote scale option (AC only), standard
61992	ECS5000EADA, 50 lb x 0.005 lb, 115 VAC 50/60 Hz, remote scale option with lb/kg switch (AC only), standard
60592	ECS5000FAAA, 75 lb x 0.005 lb, 115 VAC 50/60 Hz, local scale only, standard
54007	ECS5000FACA, 75 lb x 0.005 lb, 115 VAC 50/60 Hz, remote scale option (AC only), standard
61929	ECS5000GAAA, 100 lb x 0.01 lb, 115 VAC 50/60 Hz, local scale only, standard
62546	ECS5000GEAA, 100 lb x 0.01 lb, 115 VAC 50/60 Hz w/internal battery, local scale only, standard
61949	ECS5000GACA, 100 lb x 0.01 lb, 115 VAC 50/60 Hz, remote scale option (AC only), standard
61972	ECS5000GADA, 100 lb x 0.01 lb, 115 VAC 50/60 Hz, remote scale option with lb/kg switch (AC only), standard

All other part number configurations are available as special order units.

Applications

- Counting and weighing
- Shipping and receiving
- Stockroom and production area

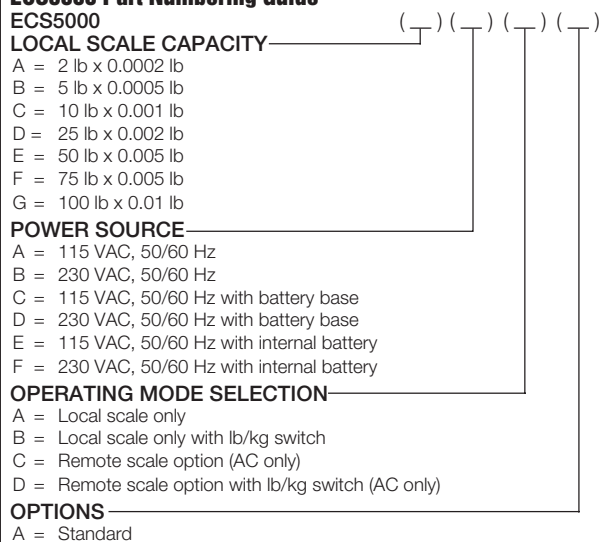
Standard Features

- Full function numerical keyboard
- Full duplex serial output, configurable to provide up to seven fields of information including a keyed entry six-digit ID number
- Bright Light Emitting Diode (LED) Display
- Negative counting
- Sample enhancement

Options/Accessories

- 16815 Service manual
- 55522 Additional operating manual

ECS5000 Part Numbering Guide



CONSULT FACTORY FOR ADDITIONAL SPECIFICATIONS

DISPLAYED RESOLUTION:

12,500 Grads. max.

INTERNAL RESOLUTION:

100,000 counts, 1,000,000 during sampling

ID STORAGE:

Storage of 20 tare and average piece weight values (local channel)

POUNDS/KILOGRAM:

Configurable to "lb only", "kg only", or conversions with optional switch

ACCUMULATOR:

Single register 999,999 piece count maximum

SERIAL DATA OUTPUT:

Port 1: full duplex, RS-232 or 20 mA loop
Port 2: simplex RS-232 or 20 mA loop

SERIAL DATA PRINTED:

Configurable to provide 6-digit ID number, gross weight, tare weight, net weight, instantaneous piece count, average piece weight, accumulated total piece count

OVERALL DIMENSIONS:

17" L x 11.5" W x 5.25" H

WEIGHT:

AC unit: 21 lb (9.5 kg) Battery unit: 40 lb (18 kg)

WARRANTY:

One year limited warranty

NCS Series Counting Scales



PART #	DESCRIPTION
41456 NCS 6 lb, 6 lb x .001
41457 NCS 12 lb, 12 lb x .002
41458 NCS 30 lb, 30 lb x .005
41459 NCS 60 lb, 60 lb x .01

The NCS Series is the solution for light-capacity counting and weighing applications.

Available in capacities from 6 lb to 60 lb, the NCS series features a bright VFD that shows weight, unit weight and piece count simultaneously.

Count on its accurate, dependable performance for simple and precise counting.

Applications

- Inventory and quality control
- Shipping and receiving
- Production counting applications

Standard Features

- 0.5" (11.5mm) Vacuum Fluorescent Display (VFD)
- 15 preset keys for average piece weight storage
- Large 13.8" x 9.6" (350mm x 243mm) platform
- Six-digit weight or count display, five-digit weight display, five-digit average piece weight display

Options/Accessories

- 42232 Additional operating manual

CAPACITY/READABILITY:

6 lb x 0.001 lb, 12 lb x 0.002 lb, 30 lb x 0.005 lb, 60 lb x 0.01 lb

INTERNAL RESOLUTION:

1:30,000

DISPLAY:

VFD, 0.5" letter height

WEIGHT DISPLAY ACCURACY:

1/6000

OPERATING TEMPERATURE:

23°F to 104°F (-5°C to 40°C)

DISPLAY ITEMS:

Weight: five digits

Unit weight: five digits

Count: six digits

Annunciators: Zero point, tare, weight check (shortage), count number (target)

FUNCTIONS:

Tare: actual weight, numeric entry

Preset: (variable setting)

Unit weight setting: actual weight or numeric entry

Power Source: 120V, 10%, 50/60 Hz

POWER CONSUMPTION:

Approximately 5 watts, 110/115 VAC

APPROVALS:

UL and C-UL listed

WARRANTY:

One year limited warranty